

Mentorship Course

FUNCTIONAL MEDICINE



\$50 per session

Register for all 12 for
a discounted price of
\$40 per session.

(\$120 savings)

To Register [Click HERE](#)
Or Use QR Code Below



Or Call 800-373-1373

Dr. Ray Bisevac is board certified in Anti-Aging, Regenerative, and Functional Medicine, and is a Fellow of the American Academy of Anti-Aging and Regenerative Medicine. He has been praised by many practitioners for the rare clarity he brings to difficult subjects and for his practical approach to challenging cases. Dr. Ray's extremely high clinical success rate with patients combined with his passion for teaching clinicians, make him the perfect mentor for your functional medicine training.

*Attendees who complete this course will receive a certificate of completion.



Ray Bisevac.
ND, ABAHP, FAARFM

Brookfield, WI

Doubletree Milwaukee-Brookfield
18155 Bluemount Rd
Brookfield, WI / 262-792-1212

1-5 PM

- Session 7 Sun., MAY 12
- Session 8 Sun., JUN 16
- Session 9 Sun., JUL 7
- Session 10 Sun., AUG 8
- Session 11 Sun., OCT 20
- Session 12 Sun., NOV 10

Bloomington, MN

Courtyard by Mall of America
7800 Bloomington Ave
Bloomington, MN / 952-876-0100

1-5 PM

- Session 7 Thurs., MAY 16
- Session 8 Thurs., JUN 20
- Session 9 Thurs., JUL 11
- Session 10 Thurs., AUG 22
- Session 11 Thurs., OCT 24
- Session 12 Thurs., NOV 14

Oak Brook, IL

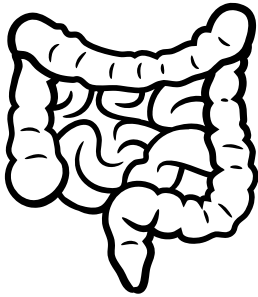
Doubletree Chicago-Oak Brook
1909 Spring Rd, Oak Brook, IL
630-472-6000

1-5 PM

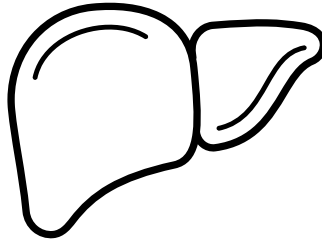
- Session 7 Sun., MAY 19
- Session 8 Sun., JUN 23
- Session 9 Sun., JUL 14
- Session 10 Sun., AUG 25
- Session 11 Sun., OCT 27
- Session 12 Sun., NOV 17

12 HALF-DAY SESSIONS

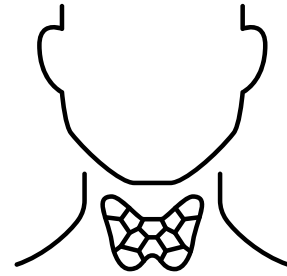
1 Gastrointestinal Processes



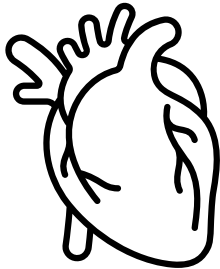
2 Detoxification - Liver/Gallbladder



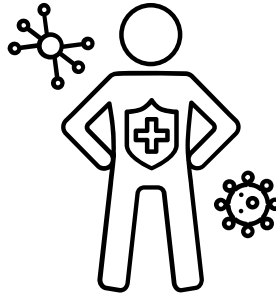
3 Endocrine System



4 Cardiovascular System



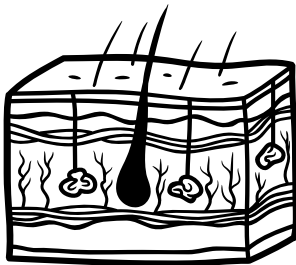
5 Immune System



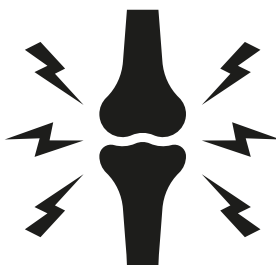
6 Nervous System



7 Secondary Organs of Elimination



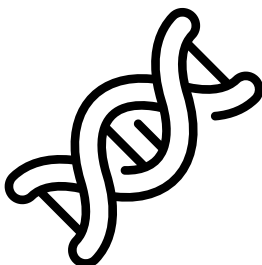
8 Motor System - Pain/Inflammation



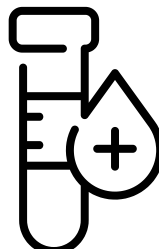
9 Functional Herbology



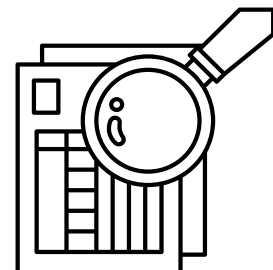
10 Methylation and Epigenetics



11 Functional Lab Testing



12 Case Studies and Protocols



FOR MORE INFORMATION: ANDJELA 219-902-9030
ANDJELA@METABOLICMANAGEMENT.COM