

# Mentorship Course

## FUNCTIONAL MEDICINE



For More Info Or  
To Register [Click HERE](#)  
Or Use QR Code Below



Or Call 800-373-1373

**\$50 per session**

Register for all 12 for  
a discounted price of  
\$40 per session.  
(\$120 savings)

Dr. Ray Bisevac is board certified in Anti-Aging, Regenerative, and Functional Medicine, and is a Fellow of the American Academy of Anti-Aging and Regenerative Medicine. He has been praised by many practitioners for the rare clarity he brings to difficult subjects and for his practical approach to challenging cases. Dr. Ray's extremely high clinical success rate with patients combined with his passion for teaching clinicians, make him the perfect mentor for your functional medicine training.

\*Attendees who complete this course will receive a certificate of completion.

## Brookfield, WI

Doubletree Milwaukee-Brookfield  
18155 Bluemount Rd  
Brookfield, WI / 262-792-1212

**1-5 PM**

**Session 6 Sun., APR 7**

**Session 7 Sun., MAY 12**

## Bloomington, MN

Courtyard by Mall of America  
7800 Bloomington Ave  
Bloomington, MN / 952-876-0100

**1-5 PM**

**Session 6 Thurs., APR 11**

**Session 7 Thurs., MAY 16**

## Oak Brook, IL

Doubletree Chicago-Oak Brook  
1909 Spring Rd, Oak Brook, IL  
630-472-6000

**1-5 PM**

**Session 6 Sun., APR 14**

**Session 7 Sun., MAY 19**

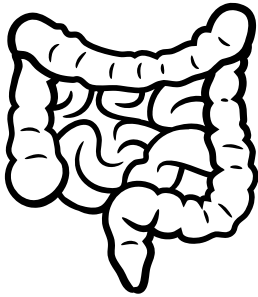
*\*Sessions 8-12 dates to be announced later.*



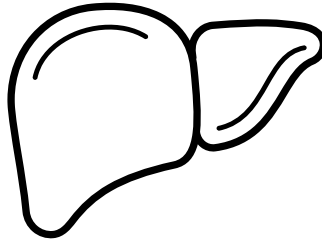
*Ray Bisevac.*  
ND, ABAHP, FAARFM

# 12 HALF-DAY SESSIONS

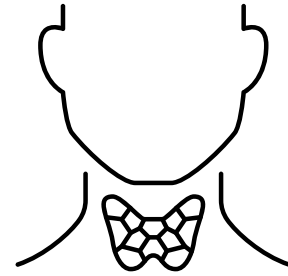
## 1 Gastrointestinal Processes



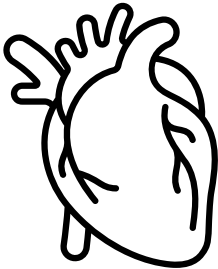
## 2 Detoxification - Liver/Gallbladder



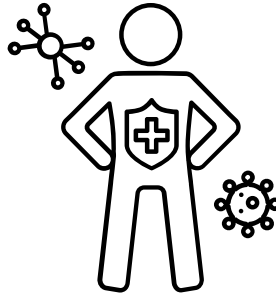
## 3 Endocrine System



## 4 Cardiovascular System



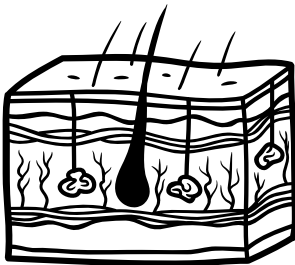
## 5 Immune System



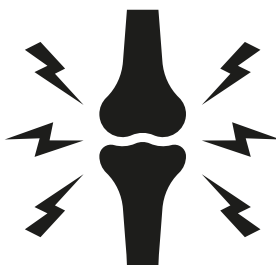
## 6 Nervous System



## 7 Secondary Organs of Elimination



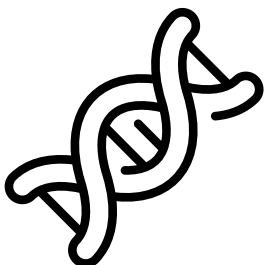
## 8 Motor System - Pain/Inflammation



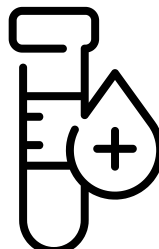
## 9 Functional Herbology



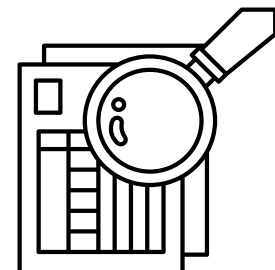
## 10 Methylation and Epigenetics



## 11 Functional Lab Testing



## 12 Case Studies and Protocols



FOR MORE INFORMATION: ANDJELA 219-902-9030  
ANDJELA@METABOLICMANAGEMENT.COM