

Mentorship Course

FUNCTIONAL MEDICINE



\$50 per session

Register for all 12 for
a discounted price of
\$40 per session.
(\$120 savings)

To Register [Click HERE](#)
Or Use QR Code Below



Or Call 800-373-1373

Dr. Ray Bisevac is board certified in Anti-Aging, Regenerative, and Functional Medicine, and is a Fellow of the American Academy of Anti-Aging and Regenerative Medicine. He has been praised by many practitioners for the rare clarity he brings to difficult subjects and for his practical approach to challenging cases. Dr. Ray's extremely high clinical success rate with patients combined with his passion for teaching clinicians, make him the perfect mentor for your functional medicine training.

*Attendees who complete this course will receive a certificate of completion.

Brookfield, WI

Doubletree Milwaukee-Brookfield
18155 Bluemount Rd
Brookfield, WI / 262-792-1212
1-5 PM

Session 4 Sun., JAN 21
Session 5 Sun., FEB 18
Session 6 Sun., APR 7
Session 7 Sun., MAY 12

Bloomington, MN

Courtyard by Mall of America
7800 Bloomington Ave
Bloomington, MN / 952-876-0100
1-5 PM

Session 4 Thurs., JAN 18
Session 5 Thurs., FEB 22
Session 6 Thurs., APR 11
Session 7 Thurs., MAY 16

Oak Brook, IL

Doubletree Chicago-Oak Brook
1909 Spring Rd, Oak Brook, IL
630-472-6000
1-5 PM

Session 4 Sun., JAN 28
Session 5 Sun., FEB 25
Session 6 Sun., APR 14
Session 7 Sun., MAY 19

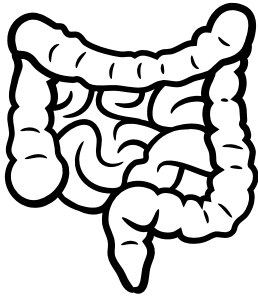
**Sessions 8-12 dates to be announced later.*



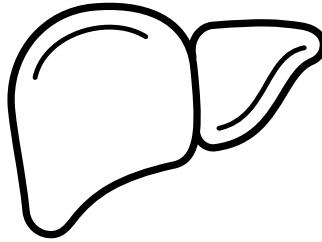
Ray Bisevac.
ND, ABAHP, FAARFM

12 HALF-DAY SESSIONS

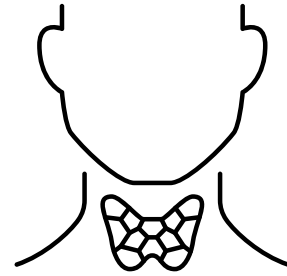
1 Gastrointestinal Processes



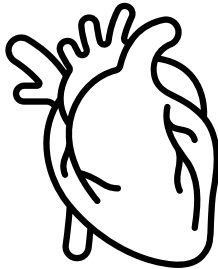
2 Detoxification - Liver/Gallbladder



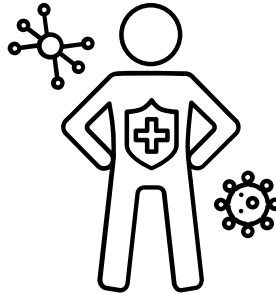
3 Endocrine System



4 Cardiovascular System



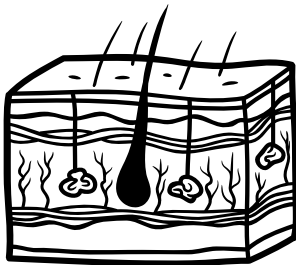
5 Immune System



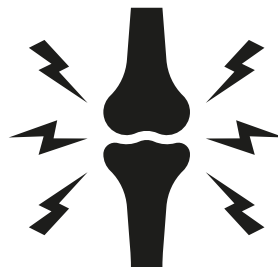
6 Nervous System



7 Secondary Organs of Elimination



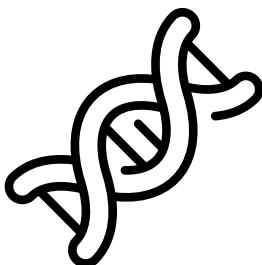
8 Motor System - Pain/Inflammation



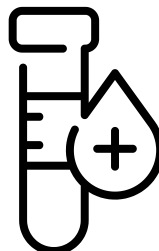
9 Functional Herbology



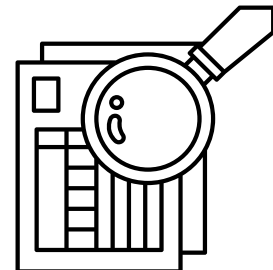
10 Methylation and Epigenetics



11 Functional Lab Testing



12 Case Studies and Protocols



FOR MORE INFORMATION: ANDJELA 219-902-9030

ANDJELA@METABOLICMANAGEMENT.COM