

Secondary Pathways of Elimination

SKIN, SINUSES, LUNGS, KIDNEYS, BLADDER

Rajko Bisevac ND, ABAAHP, FAARFM
tel: 630-277-9169

1

OUTLINE

- I. PROBLEM
- II. LAB TESTS, SYMPTOMS
- III. SOLUTION

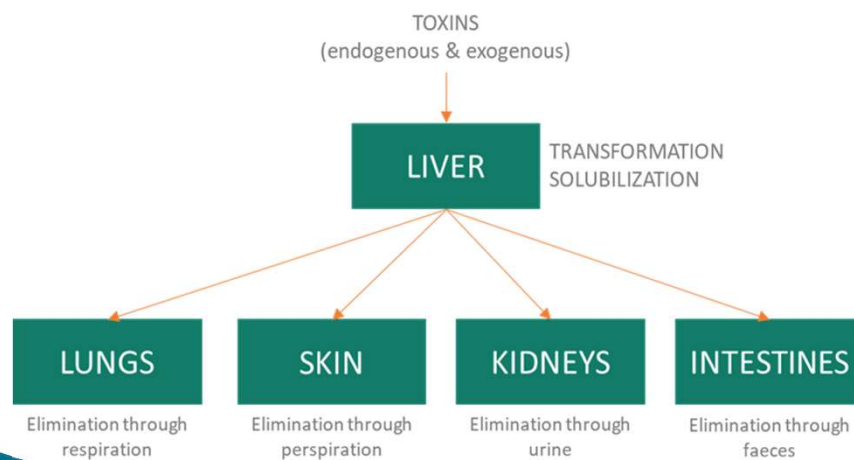
2

PRIMARY vs SECONDARY

- ▶ When primary routes are overburdened, the body attempts to shed toxins by secondary routes.
- ▶ Optimal functioning of primary routes will reduce the burden for secondary routes of elimination.
- ▶ Organs of secondary routes: skin, hair, nails, sinus, lungs, kidney, bladder

3

PRIMARY & SECONDARY ORGANS OF ELIMINATION



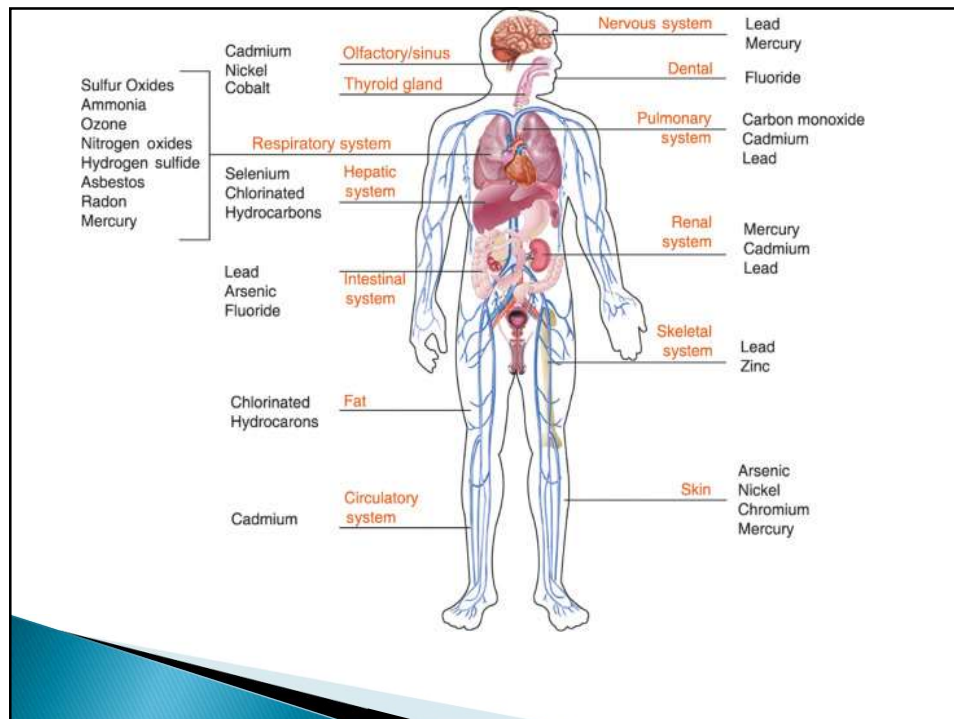
4

- ▶ Most consider the kidneys second only to the liver in importance for toxin elimination.
- ▶ 20% to 25% of cardiac output goes through these tiny organs, allowing them to filter the blood a remarkable 60 times per day

3 major elements kidneys process:

- Kidneys rid the body of unwanted products of metabolism
- toxins that have been made water soluble by phase 2 in the liver;
- direct excretion of industrial toxins, such as heavy metals and a number of new-to-nature molecules.

5

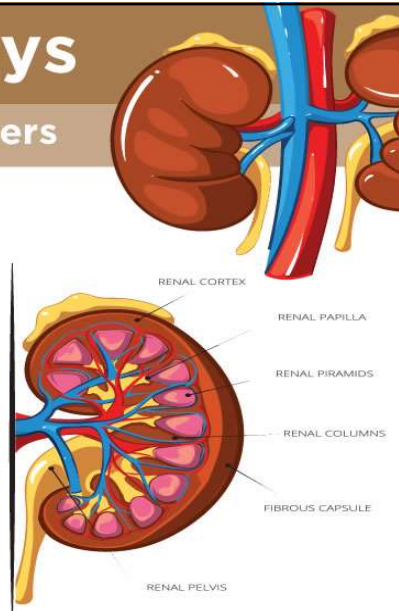


6

The Kidneys

Water & Blood Filters

The kidneys purify your blood from toxic substances including alcohol, medications, artificial coloring, and many other man-made harmful substances.



7

Progression of Secondary routes

- ▶ 1. **Excretion**: diarrhea, runny nose, sweating, tears, joint pain, increased urination
- ▶ 2. **Inflammation**: fever, acne, bronchitis, urinary tract infection, acute infection
- ▶ 3. **Deposition**: toxins deposit into extracellular space
- ▶ 4. **Impregnation**: toxins in extracellular space become a part of the matrix and connective tissue. Allergies, migraines, tinnitus, autoimmune diseases, metabolic syndrome
- ▶ 5. **Degeneration**: toxins destroy large groups of cells within organ. Scleroderma, Alzheimer's, macular degeneration, diabetes

8

CLEAN & DIRTY WATER FILTERS



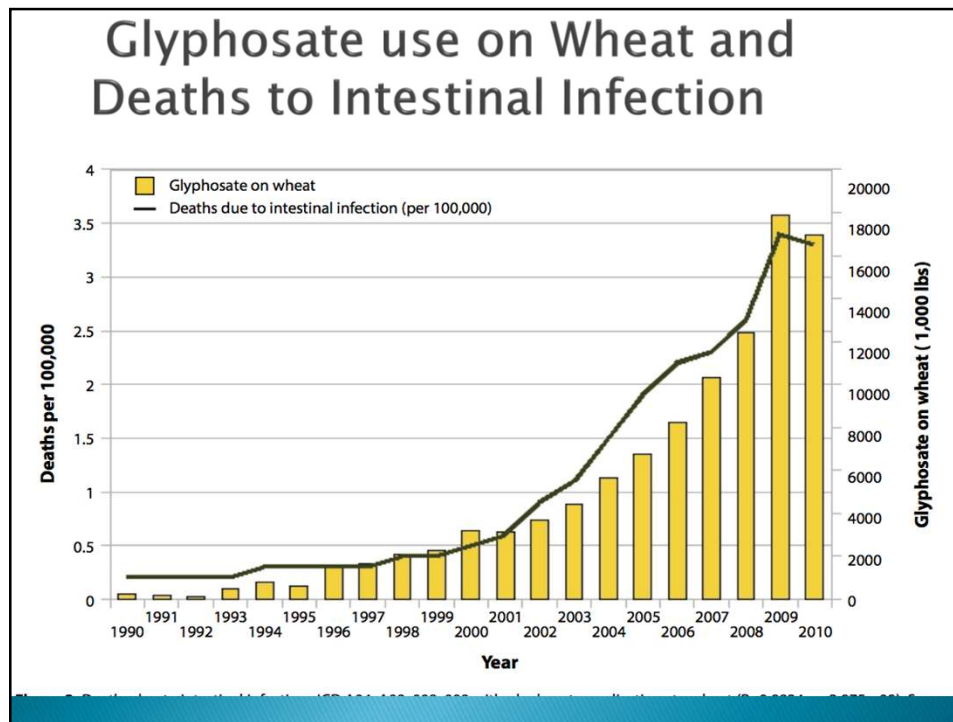
9

Kidney Disease and Glyphosate

- ▶ Round up on wheat, sugar cane, barley, flax, animal feed, etc. Common practice started in early 1990's
- ▶ Increases the drying process
- ▶ Increases the yield

- ▶ Glyphosate, pathways to modern diseases II: Celiac sprue and gluten intolerance Anthony SAMSEL and Stephanie SENEFF

10



11

Kidney Disease and Glyphosate

- ▶ Glomerulonephritis is also found in association with celiac disease (Katz et al 1979; Peters et al., 2003)
- ▶ A Swedish study showed a 5 fold increase in nephritis risk in celiac patients (Peters et al., 2003)
- ▶ NEPHRITIS – The tissues in the kidney become inflamed and have problems filtering waste from the blood. Nephritis may be caused by infection, inflammatory conditions (such as lupus), certain genetic conditions, and other diseases or conditions.

12

4 Reasons why Glyphosate is Killing our Patients

- ▶ 3. Interference with cytochrome enzymes, especially P450 which are critical for detoxifying environmental toxins of all kinds.
- ▶ Thus we are not only ingesting a toxin but we limit our ability to break down other toxins.

13

It's everywhere ...

- ▶ Study in Mississippi found Glyphosate
- ▶ in 75% of the air and water samples tested
- ▶ Sunchips... 0.14 ppm, or 0.14 mg/kg.
- ▶ Fruit Loops...
- ▶ Found in breast milk
- ▶ Routinely found in urine , with the levels being higher in individuals with chronic diseases

14

Glyphosate is Bioaccumulative

- ▶ Glyphosate bio-accumulates in our bodies...
- ▶ Mitochondrial Poison....
- ▶ Studies Show ...endocrine disruptive capability, birth defects, male infertility and **chronic kidney disease**.
- ▶ Glyphosate has been found to kill beneficial gut microbiota in chickens

15

“Glyphosate detox”

- ❑ Chlorella 2 tid
- ❑ Bio-Doph 7 Plus 2 at bed
- ❑ Fermented and Cultured foods..2 oz bid
- ❑ Nitro-Greens 1 scoop

16

Lab tests to monitor Kidney Function

- ▶ Examples of updated testing for underlying components:
 - ▶ hs CRP .. Systemic Inflammation
 - ▶ Fasting glucose..
 - ▶ Fasting Insulin...blood sugar
 - ▶ HgbA1c... blood sugar
 - ▶ Vitamin D
 - ▶ Creatinine

17

Lab tests to monitor Kidney Function

- ▶ BUN ... also need for HCL
- ▶ eGR
- ▶ WBC...
- ▶ Urine Micro Albumin ...
- ▶ Urine pH...
- ▶ Urine... Microscopic exam to determine source of stone

18

Symptoms of kidney disease

- ▶ In the early stages of kidney disease, people can have **no symptoms**. In fact, some people have no symptoms until over **90%** of their kidney function has gone.
- tiredness
- **difficulty sleeping**
- **headaches**
- shortness of breath
- nausea and vomiting
- changes in the amount and number of times urine is passed
- changes in the appearance of urine or blood in the urine
- puffiness in the legs and ankles
- pain in the kidney area
- high blood pressure
- itching
- bad breath
- a metallic taste in the mouth.

19

Kidney Stone Support

- ▶ **Primary Support**
- ▶ Super Phosphozyme Liquid -10-25 drops 1-3 times a day
- ▶ Nephra-Zyme 2-4 tabletsbid-qid
- ▶ or
- ▶ Renal Plus 2-4 tablestbid-qid
- ▶ **Secondary Support**
- ▶ B6 Phosphate 2-4 tablets bid-qid
- ▶ Magnesium as Mg-zyme 4-8 at bedtime
- ▶ or Aqua Mag CL 1-2 tsp 2 or more times a day

20

Kidney Stone Support (Emergency)

- ▶ **Super phosphozyme** 10–25 drops 1–3 times a day...
- ▶ Phosphorus as ortho–phosphoric acid is used to mobilize calcium from tissue deposits and kidney stones.
- ▶ Formulated with Inositol and riboflavin in a proprietary blend 40 mg for each 30 drops taken water. Will create an acid urine.

21

Kidney Stones –“Urate Stones

Urate stones (Determined by Microscopic examination of the urine), tend to form in persistently low pH and where uric acid tends high.

Folate–5–Plus or 5–MTHF plus forte 3 bid

B12 2000 1 per day

Li–Zyme Forte 2 tablets per waking hour for 10 days then 3 tablets tid

Alkalinize as needed with Potassium HP with Mag.

22

PROTOCOL

- Carbamide Plus, 3 bid, empty
- Cytozyme KD, 3 bid, empty stomach
- Renal Plus, 2 bid, empty
- CoQ Zyme 100 Plus, 1 tid, with food
- UT Complex
- MSM 5 caps E
- Mo zyme forte (taken together with MSM), 1 qd
- NAC 1 bid E
- Argizyme

23

GOAL

- ▶ Detoxify
- ▶ Optimize biochemical functions
- ▶ Provide essential nutrients
- ▶ Create new healthy cells

24

CARBAMIDE PLUS



25

CARBAMIDE PLUS

- ▶ Carbamide or USP **urea**, is a water soluble, non-toxic substance, naturally produced in the liver. Carbamide is utilized by the body in a number of processes, primarily nitrogen excretion and synthesized by the body as part of the urea cycle.
- ▶ A critical role in the re-absorption of water and key minerals from excreted urine. This mechanism is important for **HYDRATION** and the maintenance of healthy blood pressure

26

UREA



27

CARBAMIDE PLUS

- ▶ The surface tension of the water
- ▶ Reduces the electrical conductivity of water. Removing the static electricity from the fluids affects them to not stick together and can move "more easily" through membranes.
- ▶ This increases the rate of fluids transferring across the cell membranes of patients with edema. This process will denature the proteins that may be impairing or blocking healthy fluid exchange.
- ▶ The result is a release of free calcium phosphate into the blood which reacts with sodium bicarbonate to provide calcium bicarbonate an important blood buffer.

28

CARBAMIDE PLUS

- ▶ Healthy fluid levels
- ▶ Acts as a **physiological diuretic** to promote the formation and excretion of urine, which helps to keep fluid levels balanced throughout the body.
- ▶ Water and other fluids pass through cell membranes by **osmosis**. The rate of osmosis depends on the concentration of fluids, temperature, and electrical charges on both sides of cell membranes. In osmosis, movement continues until there is an equal concentration on both sides. When balance is interrupted, fluid can either accumulate inside of tissues or be released outside at abnormal rates. For example, fluid can build up around the ankles or feet when sitting for a long period of time.

29

PROTOCOL

- Carbamide Plus, 3 bid, empty
- Cytozyme KD, 3 bid, empty stomach
- Renal Plus, 2 bid, empty
- CoQ Zyme 100 Plus, 1 tid, with food
- UT Complex
- MSM 5 caps E
- Mo zyme forte (taken together with MSM), 1 qd
- NAC 1 bid E
- Argizyme

30

SOLUTION

- ▶ DO NOT ALLOW YOUR KIDNEYS TO BE PRIMARY FILTER OF TOXINS
- ▶ GET RO WATER FILTRATION SYSTEM
- ▶ AVOID ARTIFICIAL COLORINGS, FLAVORINGS
- ▶ MINIMIZE COSMETICS, DEODORANTS